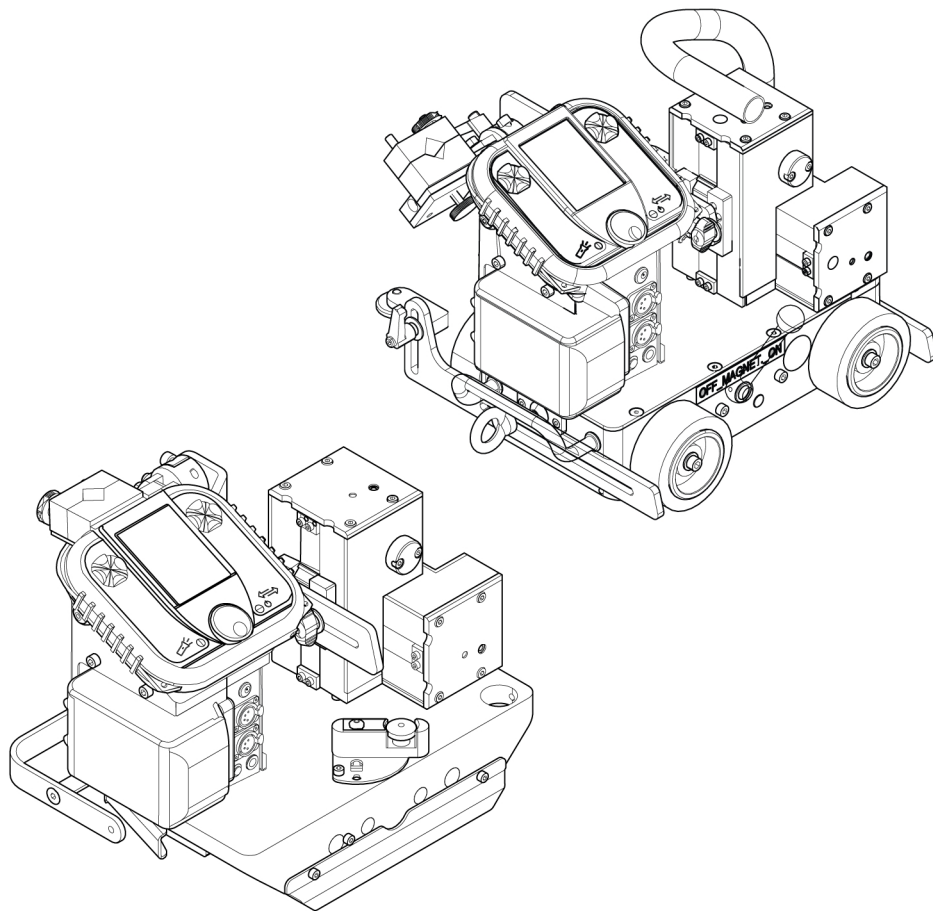


# **TRACFINDER RAIL**

# **TRACFINDER WHEEL**



## **Spare parts list**

<b>Ordering no.</b>	<b>Denomination</b>	<b>Note</b>
A000 101 097	TRACFINDER WHEEL Standard package	
A000 101 098	TRACFINDER WHEEL Advanced package	
A000 101 217	TRACFINDER WHEEL Advanced+ package	
A000 101 099	TRACFINDER RAIL Standard package	
A000 101 100	TRACFINDER RAIL Advanced package	
A000 101 218	TRACFINDER RAIL Advanced+ package	
0448 741 *	TRACFINDER WHEEL	Instruction manual
0448 742 *	TRACFINDER RAIL	Instruction manual
0448 744 001	TRACFINDER RAIL AND TRACFINDER WHEEL	Service manual

Spare parts may be ordered through your nearest ESAB dealer, see [esab.com](http://esab.com). When ordering, please state product type, serial number, denominations and ordering numbers according to the spare parts list. This facilitates dispatch and ensures correct delivery.

Maintenance and repair work should be performed by an experienced person, and electrical work only by a trained electrician. Use only recommended spare parts.

For accessories to the product, see the instruction manual.

The three last digits in the document number of the manual show the version of the manual. Therefore they are replaced with \* here. Make sure to use a manual with a serial number or software version that corresponds with the product, see the front page of the manual.

TABLE OF CONTENTS

---

<b>1</b>	<b>SPARE PARTS</b> .....	<b>4</b>
1.1	Dual motor Tracfinder wheel .....	4
1.2	Tracfinder rail .....	7
1.3	Standard tower .....	8
1.4	Standard interface .....	10
1.5	Remote control .....	11
1.6	Manual runner .....	13
1.7	Electric runner .....	14
1.8	Right hand torch mount .....	16
1.9	ESAB communication box (MODBUS) .....	18
	Electric runner (145 mm travel) .....	19
	Pendulum oscillator .....	21
	Corner torch mount .....	22
	Standard cornice rail .....	23
	High temperature cornice rail .....	24
	Soft magnetic rail standard .....	25
	Soft magnetic rail - High temperature 1500 mm .....	26
	Soft magnetic rail - Standard semi length 750 mm .....	27
	Soft magnetic rail - High temperature semi length 750 mm .....	28
	Rigid magnetic rail 1500 mm .....	29
	Plates .....	30
	High temperature additional magnet plate .....	31
	Rail end stop .....	32

# 1 SPARE PARTS

## 1.1 Dual motor Tracfinder wheel

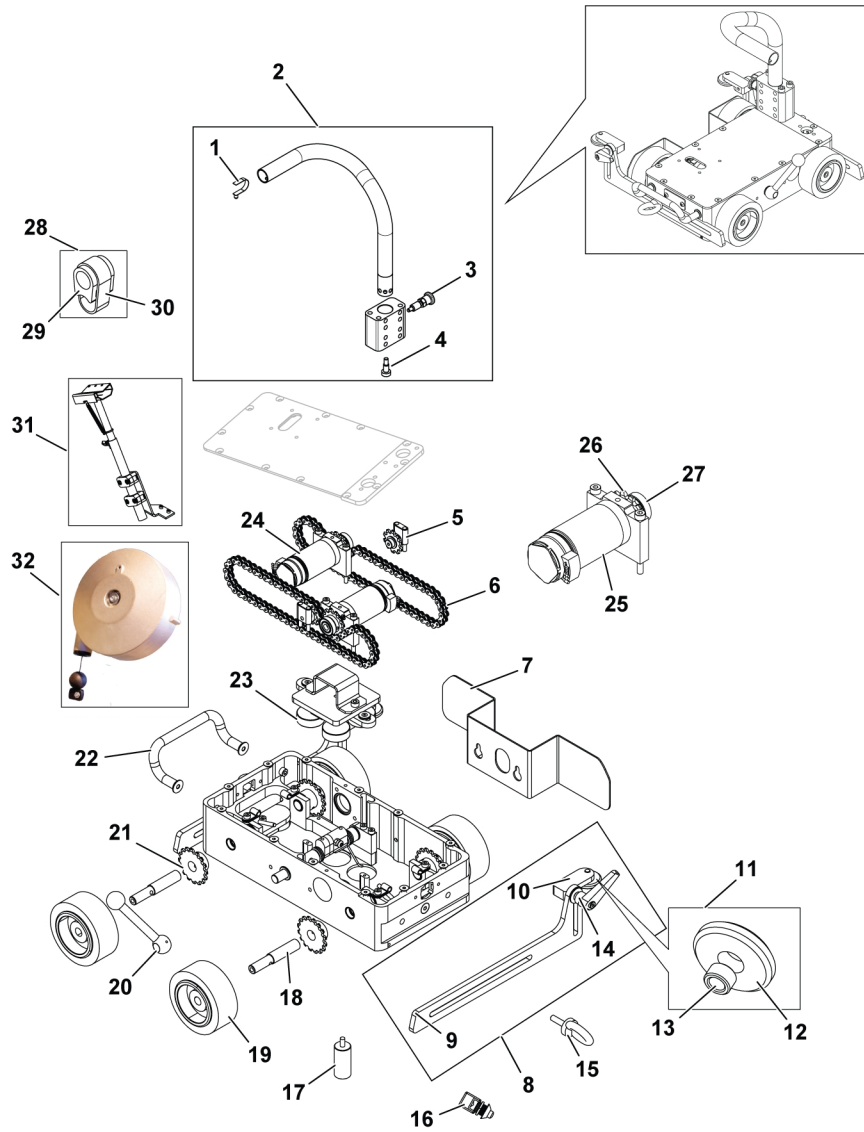
Item	Qty	Ordering no.	Denomination	Notes
1	1	0464 752 441	Grip spring mount	Set of 5
2	1	0464 752 442	Complete tube handle	Includes 1, 3, and 4
3	1	0464 752 443	Indexing pin	M10
4	1	0464 752 444	Shoulder screw	M6×12
5	2	0464 752 445	Chain tensioner sprocket	
6	2	0464 752 446	Link chain	05B1 31
7	1	0464 752 447	Wheel protective sheet	D75
8	2	0464 752 449	Complete standard crabbing arm	250 mm
9	2	0464 752 452	Standard arm	250 mm
10	2	0464 752 453	Complete roller on mount	
11	2	0464 752 468	Complete roller	
12	2	0464 752 469	Copper support rollers	Set of 2
13	2	0464 752 470	Bronze rings	Set of 10 D6×10 L6
14	2	0464 752 537	Indexable levers	Set of 2 M6×20
15	2	0464 752 454	Long hoisting ring	M6
16	1	0464 752 455	Travel limit switch	
17	2	0464 752 456	Inductive sensor equipment	
18	4	0464 752 457	Wheel spindle	
19	4	0464 752 458	Tracfinder wheel - wheel	
		0464 752 459*	High temperature wheel (rubber free-knurled aluminum)	Ø75
20	1	0464 752 462	Magnet deactivation lever	
21	4	0464 752 463	Sprocket z=16	
22	1	0464 752 464	Black elbow bracket handle	
23	4	0464 752 465	Neodyme G45 magnet	Ø31
24	1	0464 752 466	Wheel base motorisation assembly	
25	2	0464 752 467	Movement motor with connector, Tracfinder wheel	
26	2	0464 752 638	Machined gear, 12 teeth	
27	2	0464 752 639	Bearing ball	
28		0464 752 471*	Bundle mount for handle with self gripping band	20 mm LG250 mm
29		0464 752 472*	Bundle mount for handle	

1 SPARE PARTS

Item	Qty	Ordering no.	Denomination	Notes
30		0464 752 473*	Self gripping band	20 mm LG250 mm
31		0464 752 474*	Bundle mount mast and interface	
32		0464 752 439*	Load balancer	10 - 14 Kg
33		0464 752 589*	Standard wheels	Set of 4 Ø75mm (not shown in illustration)
34		0464 752 591*	Knurled aluminum wheel	Set of 4 Ø75 mm not shown in illustration)
35		0464 752 450*	Complete long crabbing arm	400 mm (not shown in illustration)
36		0464 752 451*	Complete extra long crabbing arm	700 mm (not shown in illustration)
37		0464 752 440*	Wheel protective sheet	Ø100 mm (not shown in illustration)
38		0464 752 460*	Tracfinder wheel - wheel	Ø100 mm (not shown in illustration)
39		0464 752 461*	Complete big plastic wheels	Set of 4 Ø100mm (not shown in illustration)

\* Optional accessories

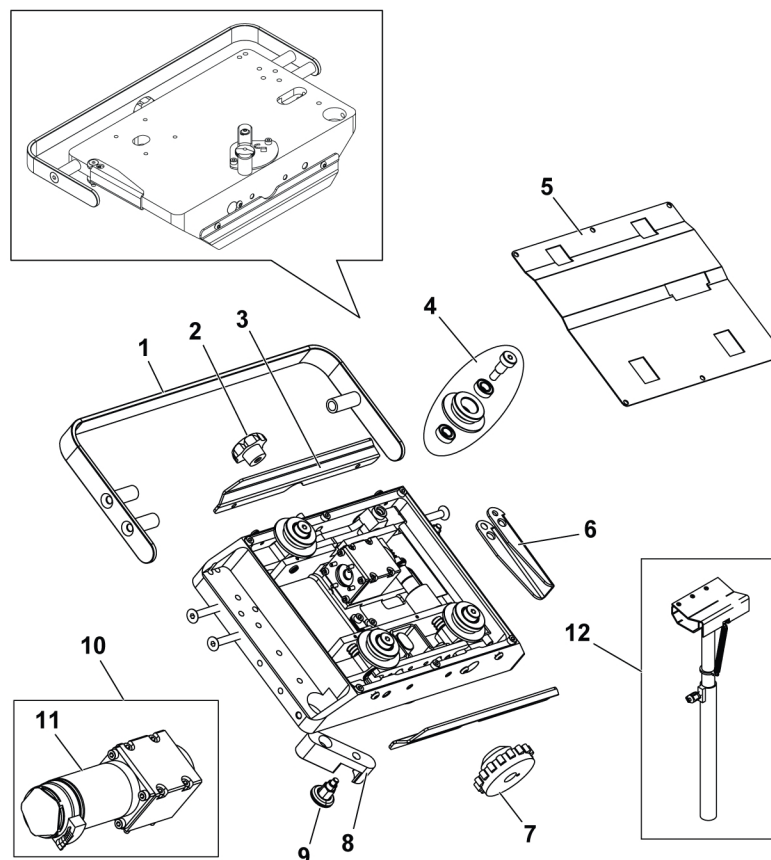
# 1 SPARE PARTS



## 1.2 Tracfinder rail

Item	Qty	Ordering no.	Denomination	Notes
1	1	0464 752 577	Carrying handle	
2	1	0464 752 578	Roller adjustment knob	
3	2	0464 752 579	Protective sheet	
4	4	0464 752 580	Rail base roller sub-assembly	
5	1	0464 752 581	Protective housing	
6	1	0464 752 582	Clutch lever	
7	1	0464 752 583	Tracfinder rail drive pinion	
8	1	0464 752 584	Lever	
9	1	0464 752 585	Indexing pin	M8
10	1	0464 752 641	Tracfinder rail sub-assembly motor	
11	1	0464 752 586	Travel motor with connector, Tracfinder rial	
12		0464 752 587*	Complete torch bundle mount mast	
13	1	0464 752 617	Frame connect bracket for Y motor axis	(not shown in illustration)

\* Optional accessories



### 1.3 Standard tower

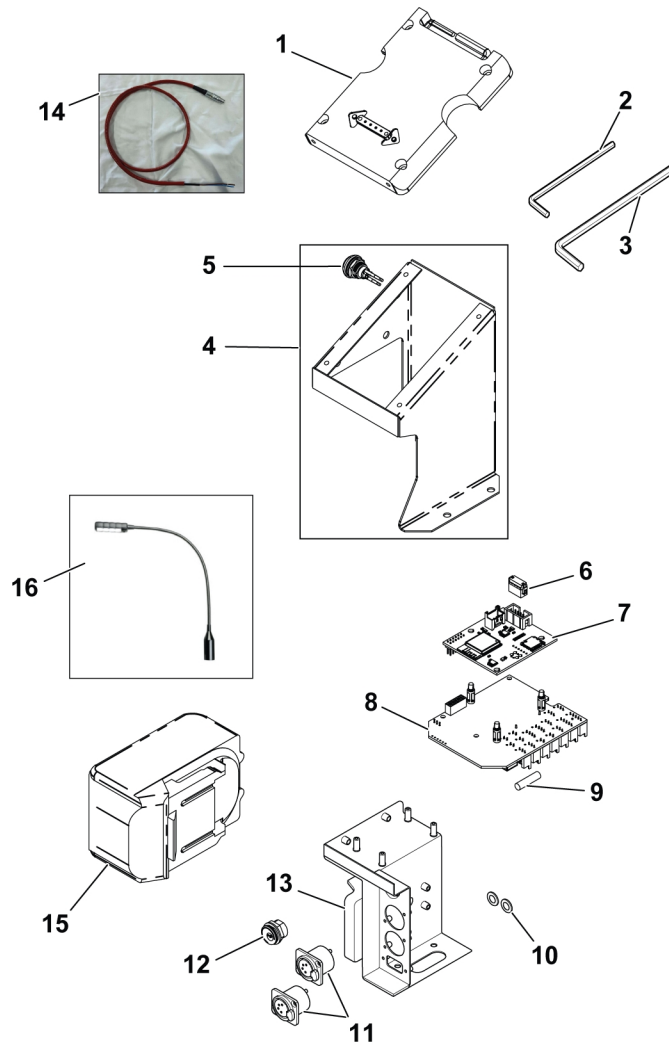
Item	Qty	Ordering no.	Denomination	Notes
1	1	0464 752 476	Remote-control dock	
2	1	0464 752 477	Allen key	3 mm
3	1	0464 752 478	Allen key	5 mm
4	1	0464 752 479	ESAB standard dock mount	
5	1	0464 752 480	Tower switch with wiring harness	
6	1	0464 752 482	Remote control tower wiring harness	
7	1	0464 752 483	Control PCB	
8	1	0464 752 484	Motor control PCB	
9	1	0464 752 485	Fuse cartridge	5A 5×20
10	1	0464 752 488	Trigger peripheral connector with wiring harness	
11	1	0464 752 489	Tower exterior accessory peripheral connector with wiring harness	
12	1	0464 752 490	Arc detector peripheral connector with wiring harness	
13	1	0464 752 491	Battery holder	
14	1	0464 752 497	Trigger connection cable	length 400 mm
15		0464 752 492*	Battery	18V 5 AH
16		0464 752 496*	XLR flashlight	
17		046 4752 494*	Battery charger	(not shown in illustration)
18		0464 752 495*	Double battery charger	(not shown in illustration)

\* Optional accessories

Item	Ordering no.	Denomination	Notes
301	0464 752 481	ESAB standard tower PCB	Including item 6 to 9
302	0464 752 487	ESAB standard tower base	Including item 10 to 13

# 1 SPARE PARTS

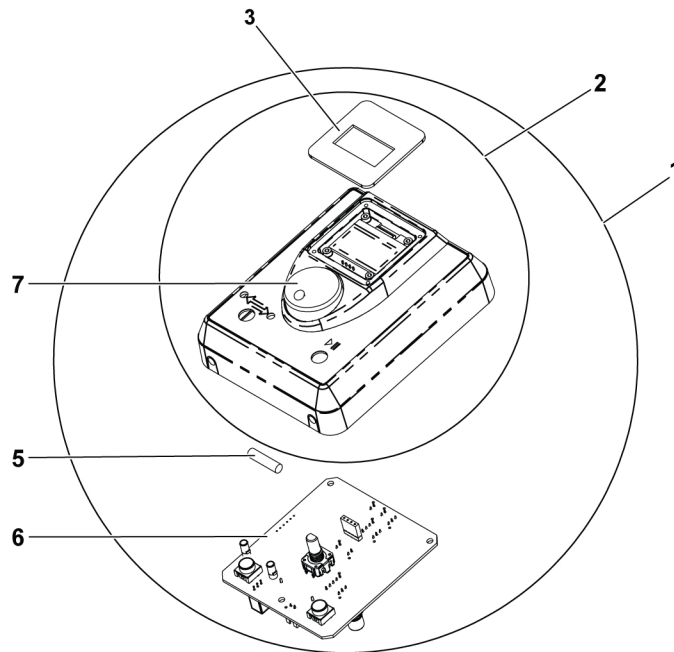
---



## 1.4 Standard interface

Item	Qty	Ordering no.	Denomination	Notes
1	1	0464 752 511	ESAB standard interface	
2	1	0464 752 512	ESAB standard interface without PCB and encoder knob	
3	1	0464 752 513	Screen protection window	
4	1	0464 752 514	Window protective film	(not shown in illustration)
		0464 752 515*	Matte window protective film	
5	1	0464 752 485	Fuse cartridge	5A, 5×20
6	1	0464 752 516	Interface PCB	
7	1	0464 752 500	Encoder knob	

\* Optional accessories

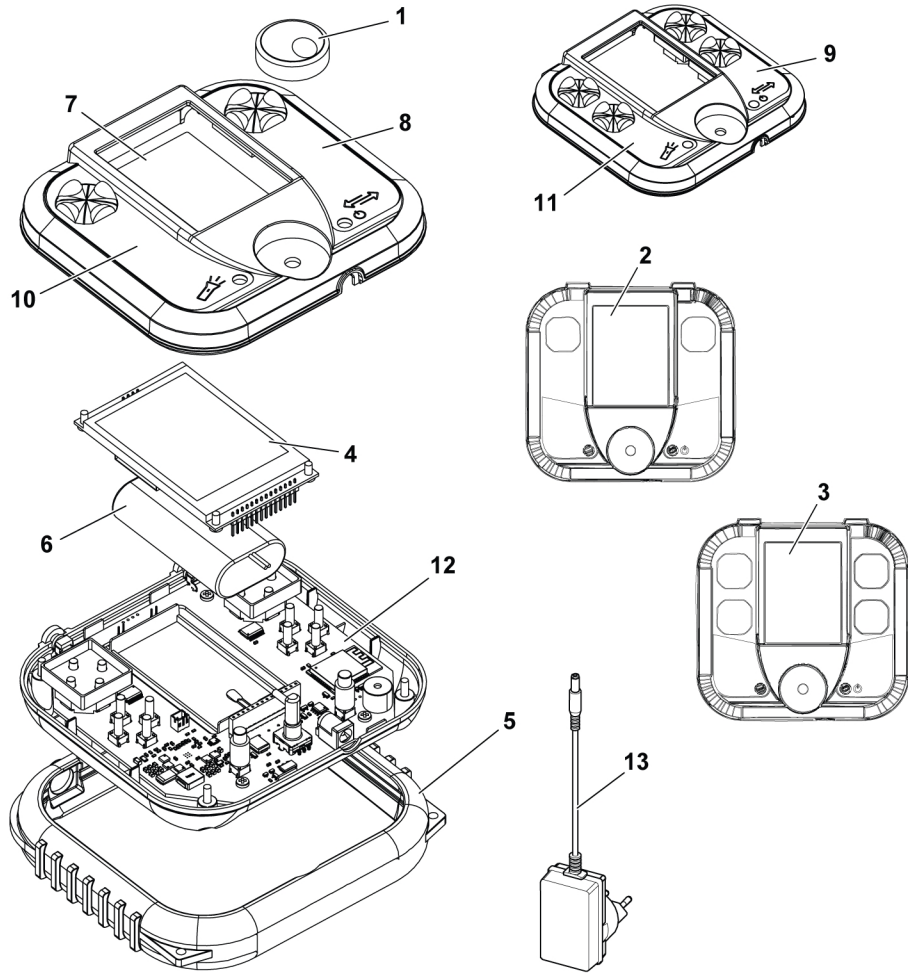


## 1.5 Remote control

Item	Qty	Ordering no.	Denomination	Notes
1	1	0464 752 500	Encoder knob	
2	1	0464 752 501	Remote control front cover with protective screen, 2 button	Including 8 and 10
3	1	0464 752 691	Remote control front cover with protective screen, 4 button	Including 9 and 11
4	1	0464 752 640	TFT 3,2" screen for remote control	
5	1	0464 752 502	Remote control protection	
6	1	0464 752 503	Battery	4400 mAh 3.7V
7	1	0464 752 504	Window protective film	
		0464 752 505*	Matte window protective film	
8	1	0464 752 506	Right plate 2 - button remote	
9	1	0464 752 507	Right plate 4 - button remote	
10	1	0464 752 508	Left plate 2 - button remote	
11	1	0464 752 509	Left plate 4 - button remote	
12	1	0464 752 565	Remote control PCB	
13	1	0464 752 510	Remote control battery charger	12V

\* Optional accessories

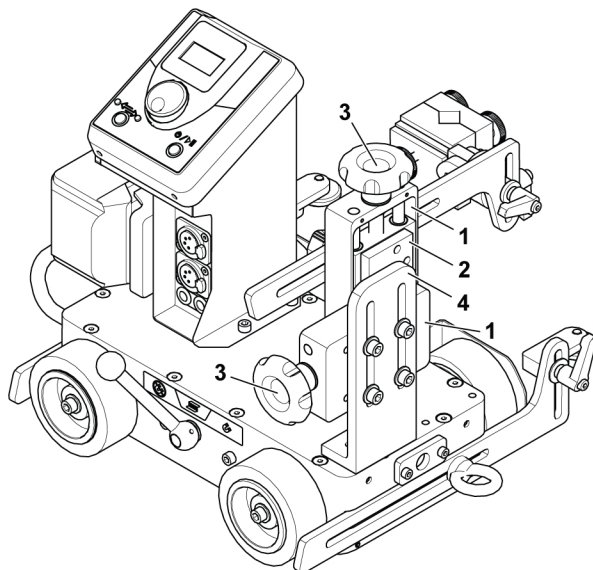
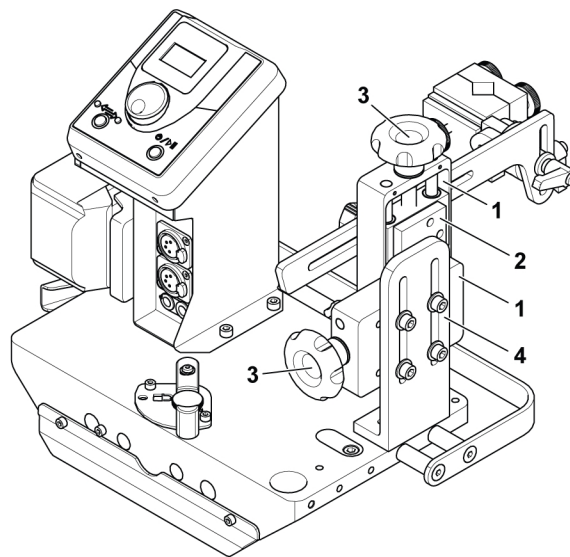
Item	Ordering no.	Denomination	Notes
501	0464 752 498	ESAB RC remote control 2-button version	Including item 1, 2, 4, 5, 6, 7, 8, 10, 12
502	0464 752 499	ESAB RC remote control 4-button version	Including item 1, 3, 4, 5, 6, 7, 9, 11, 12



## 1.6 Manual runner

Item	Qty	Ordering no.	Denomination	Notes
1	2	0464 752 539	Single time runner	38 mm
2	1	0464 752 541	Manual carriage connecting bracket	
3	1	0464 752 542	Adjustment knob	Ø51
4	1	0464 752 475	Frame connecting bracket manual Y axis	
5		0464 752 540*	Big manual slide L 100 mm	100 mm (not shown in illustration)

\* Optional accessories

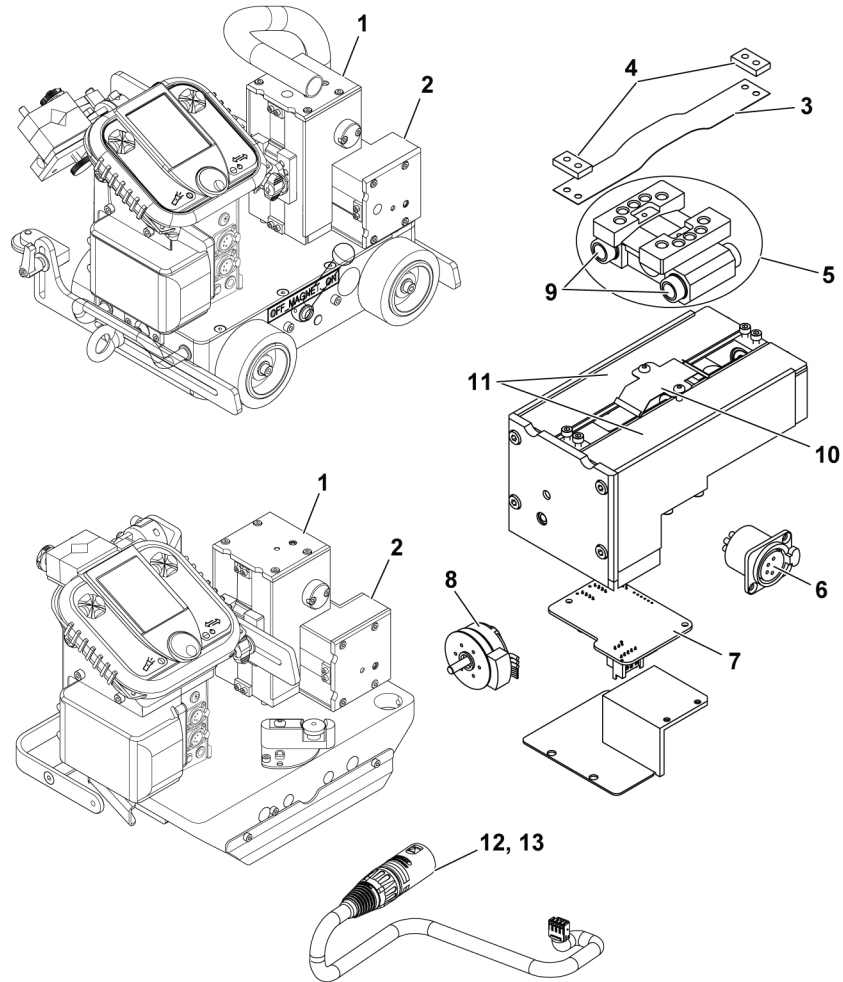


## 1.7 Electric runner

Item	Qty	Ordering no.	Denomination	Notes
1	1	0464 752 517	Motor linear axis stroke 65 mm with 250 mm cable	
2	1	0464 752 637	Motor linear axis stroke 65 mm with 400 mm cable	
3	1	0464 752 518	Strip	
4	2	0464 752 519	Attachment tab	
5	1	0464 752 520	Linear carriage	
6	1	0464 752 521	Exterior accessory peripheral connector with wiring harness	
7	1	0464 752 522	External axis PCB	
8	1	0464 752 523	Linear axis drive motor	
9	2	0464 752 525	Ball sleeve	
10	1	0464 752 526	Clamp spring	
11	2	0464 752 527	Axis protective housing	
12	1	0464 752 524	Power supply interconnection cable	250 mm
13	1	0464 752 532	Power supply interconnection cable	400 mm

Item	Ordering no.	Denomination	Notes
701	0464 752 619	Motor linear axis stroke 65 mm no cable	Including item 3 to 11

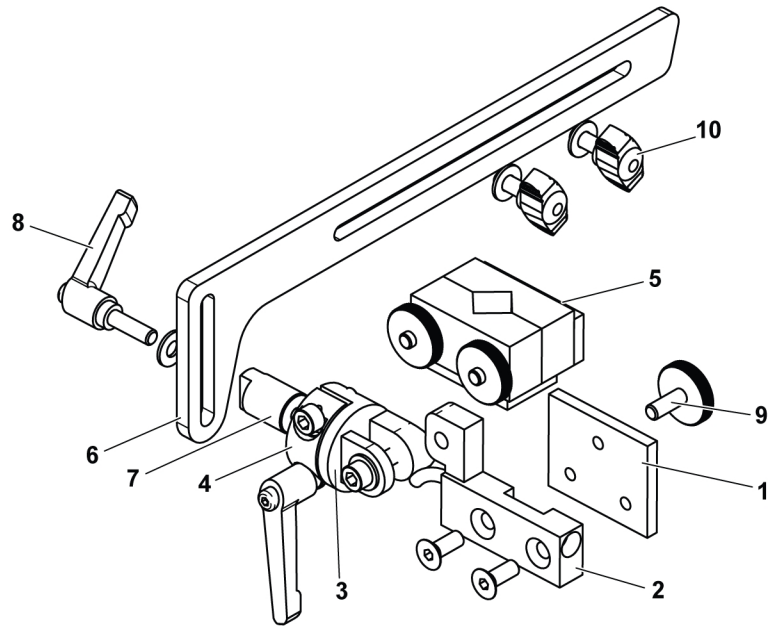


## 1.8 Right hand torch mount

Item	Qty	Ordering no.	Denomination	Notes
1	1	0464 752 543	Torch mounting plate	
2	1	0464 752 547	Arc detector sensor, long	650 mm
3	1	0464 752 550	Adjustable clamp with lever	Including item 4
4	1	0464 752 536	Torch support collar	
5	1	0464 752 551	Standard torch mount	
6	1	0464 752 452	Standard arm	250 mm
7	1	0464 752 557	Torch mount pin	
8	1	0464 752 537	Indexable levers	Set of 2 M6×20
9	1	0464 752 558	Threaded bolts	Set of 2 M6×16
10	2	0464 752 559	Butterfly screws	Set of 2 M6×16
11		0464 752 545*	Arc detector without sensor	(not shown in illustration)
12		0464 752 546*	Arc detector without symmetric sensor	(not shown in illustration)
13		0464 752 544*	Arc detection sensor, short	400 mm (not shown in illustration)
14		0464 752 548*	Symmetric arc detector	400 mm (not shown in illustration)
15		0464 752 549*	Symmetric long arc detector	650 mm (not shown in illustration)
16		0464 752 552*	High temperature torch mount	250°C (not shown in illustration)
17		0464 752 553*	Suction torch mount	(not shown in illustration)
18		0464 752 554*	Innershield torch mount	(not shown in illustration)
19		0464 752 555*	Long arm	400 mm (not shown in illustration)
20		0464 752 556*	Extra long arm	700 mm (not shown in illustration)
21		0464 752 607*	Arc sensor extension	400 mm (not shown in illustration)

\* Optional accessories

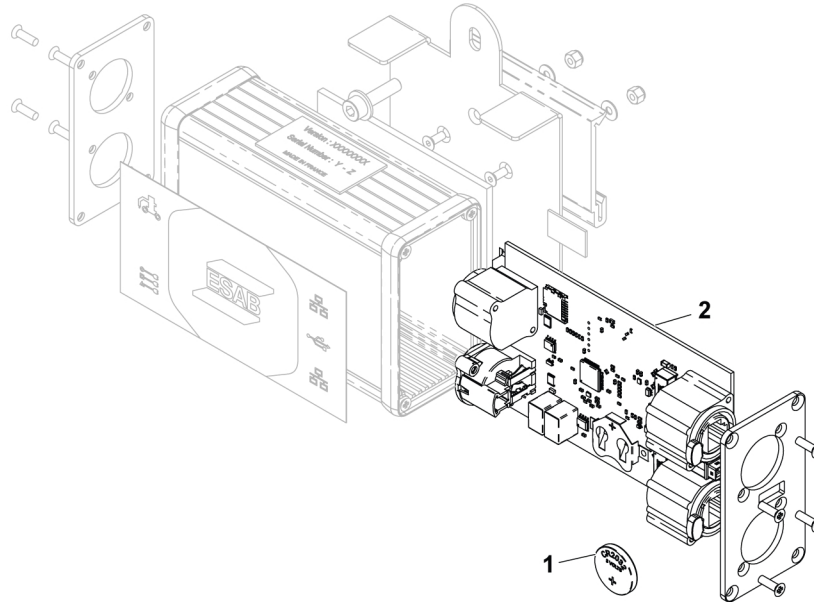
Item	Ordering no.	Denomination	Notes
801	0464 752 448	Complete standard torch holder	Including item 1 to 10



## 1.9 ESAB communication box (MODBUS)

Item	Qty	Ordering no.	Denomination	Notes
1	1	0464 752 681	Battery for communication box	
2	1	0464 752 682	Communication box PCB	

Item	Ordering no.	Denomination	Notes
901	0464 752 538	ESAB communication box (MODBUS)	Including item 1 and 2



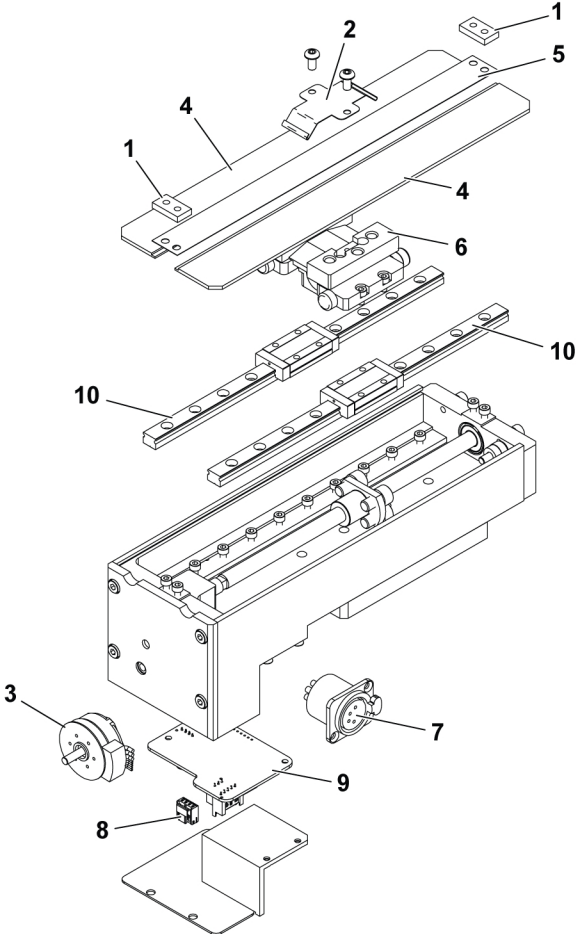
---

## ACCESSORIES

---

### Electric runner (145 mm travel)

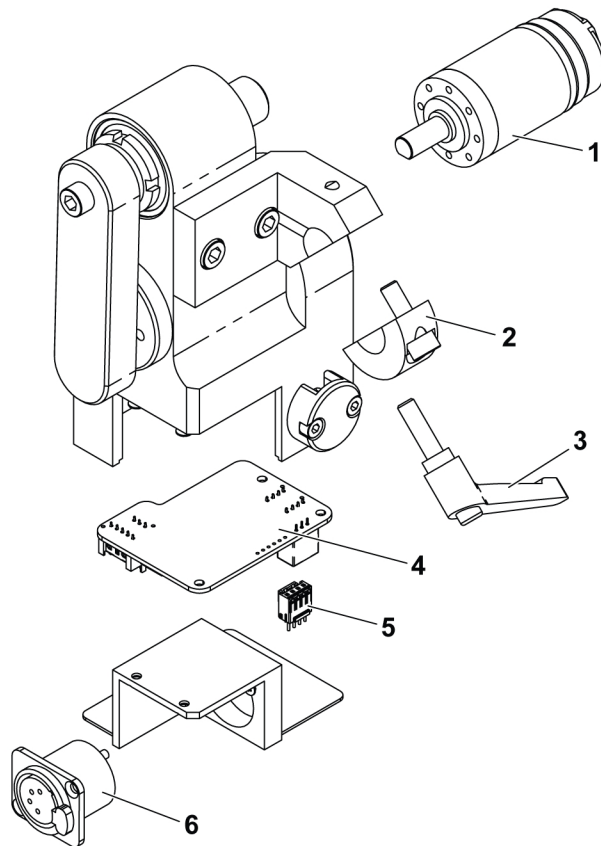
Item	Qty	Ordering no.	Denomination	Notes
1	2	0464 752 519	Attachment tab	
2	1	0464 752 526	Clamp spring	
3	1	0464 752 523	Linear axis drive motor	
4	2	0464 752 529	Housing	150 mm
5	1	0464 752 530	Strip	150 mm
6	1	0464 752 531	Carriage	150 mm
7	1	0464 752 521	Exterior accessory peripheral connector with wiring harness	
8	1	0464 752 532	Power supply interconnection cable	400 mm
9	1	0464 752 522	External axis PCB	
10	2	0464 752 533	Linear rail with bearing	150 mm
11		0464 752 528	Linear axis stroke 145 mm with 400 mm cable	150 mm (not shown in illustration)
12		0464 752 486	Motorized linear axis 145 mm no cable	(not shown in illustration)



## Pendulum oscillator

Item	Qty	Ordering no.	Denomination	Notes
1	1	0464 752 535	Pendulum axis motor	
2	1	0464 752 536	Torch support collar	
3	1	0464 752 537	Indexable lever	Set of 2 M6×20
4	1	0464 752 522	External axis PCB	
5	1	0464 752 532	Power supply interconnection cable	400 mm
6	1	0464 752 521	External accessory peripheral connector with wiring harness	

Item	Ordering no.	Denomination	Notes
2201	0464 752 534	Pendulum oscillator	Including item 1 to 6

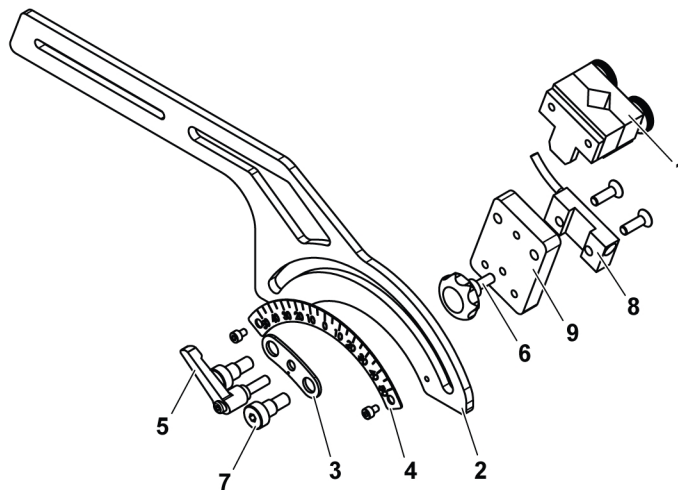


## Corner torch mount

Item	Qty	Ordering no.	Denomination	Notes
1	1	0464 752 551	Standard torch mount	
2	1	0464 752 560	Angular torch mount arm	+/- 45°
3	1	0464 752 561	Index	
4	1	0464 752 562	Angular sector	
5	1	0464 752 537	Indexable levers	Set of 2 M6×20
6	1	0464 752 563	Button with threaded rod	
7	2	0464 752 564	Stainless steel shoulder screw	Ø10 L10 M8
8	1	0464 752 438	Maglight arc detector	
9	1	0464 752 566	Torch angle bracket mounting plate	
10		0464 752 552*	High temperature torch holder	250°C maximum (not shown in illustration)
11		0464 752 553*	Suction torch mount	(not shown in illustration)
12		0464 752 554*	Innershield torch mount	(not shown in illustration)

\* Optional accessories

Item	Ordering no.	Denomination	Notes
2301	0464 752 606	Complete angular torch holder	Including item 1 to 9

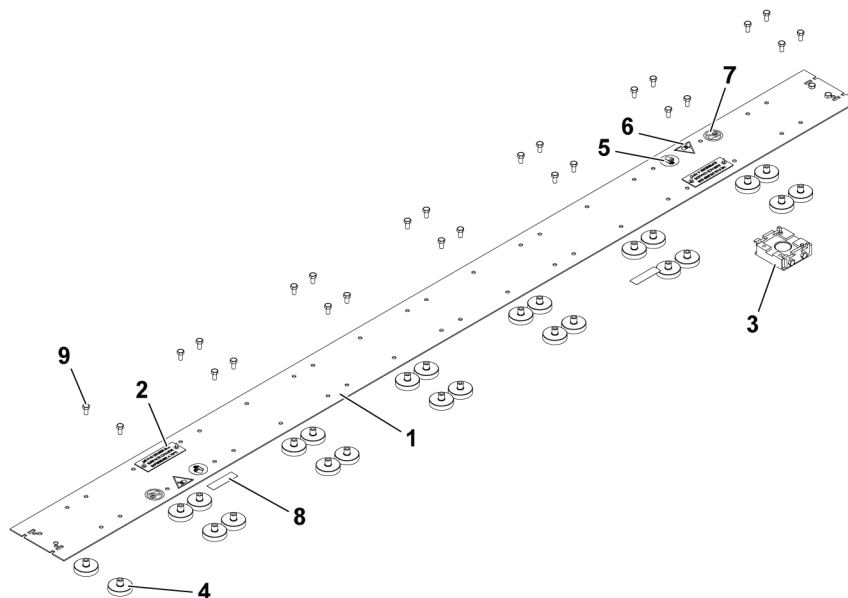


## Standard cornice rail

Item	Qty	Ordering no.	Denomination	Notes
1	1	0464 752 567	Cornice rail	1.5 m
2	2	0464 752 568	Rail temperature info label	70°C maximum
3	1	0464 752 569	Rail connector	
4	26	0464 752 570	Magnetic stud	70°C maximum
5	2	0464 752 572	Protective gloves mandatory symbol	
6	2	0464 752 573	Crushed hand symbol	
7	2	0464 752 574	No paceamker symbol	
8	2	0464 752 575	Heat-sensitive label	65-93°C
9	28	0464 752 576	Hexagon head screw	M5×10 Z8 ISO4017
10		0464 752 571*	Magnetic studs with screws	Set of 4, 70°C maximum (not shown in illustration)
11		0464 752 436*	Horizontal position arm	Set of 2 (not shown in illustration)

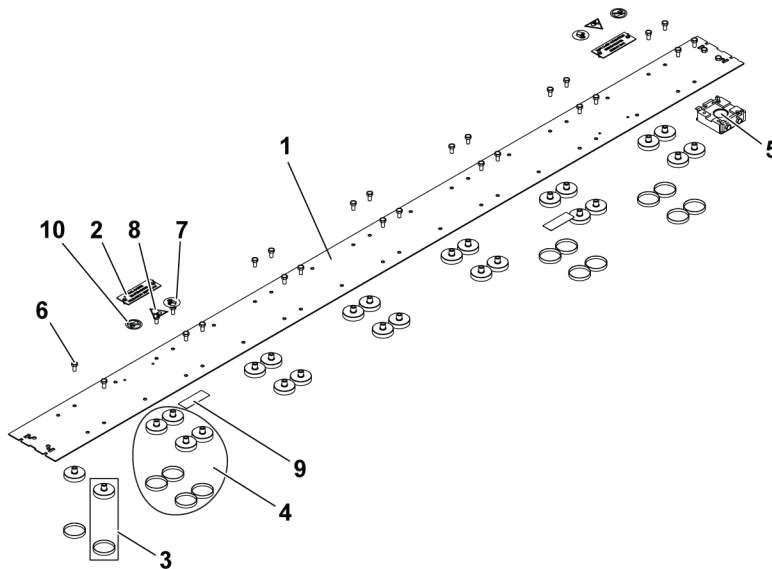
\* Optional accessories

Item	Ordering no.	Denomination	Notes
2401	0464 752 435	Flexible track horizontal position guide	Including items 1 to 9



## High temperature cornice rail

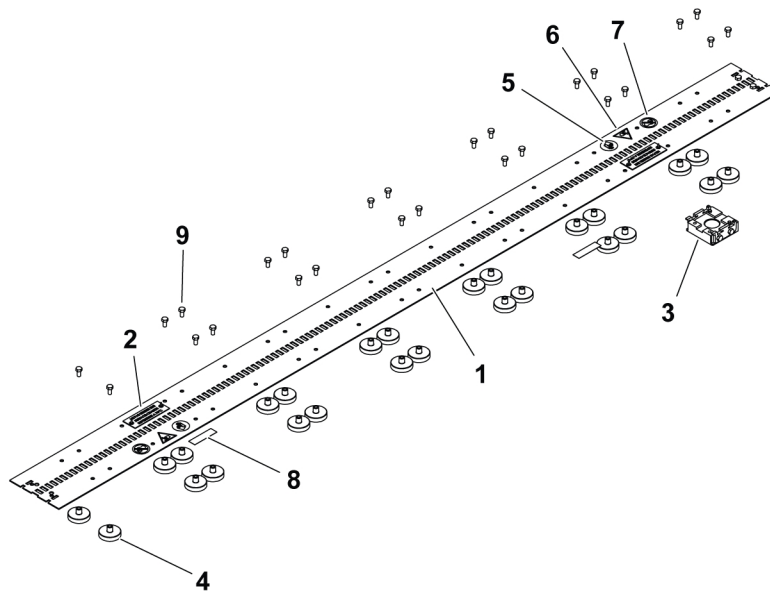
Item	Qty	Ordering no.	Denomination	Notes
1	1	0464 752 567	Cornice rail	1.5 m
2	2	0464 752 598	Info label High temperature	
3	26	0464 752 600	High temperature magnet + cap + screw	Ø32 mm
4	14	0464 752 601	High temperature magnetic studs with screws	Set of 4
5	1	0464 752 569	Rail connector	
6	28	0464 752 576	Hexagon head screw	M5×10 Z8 ISO4017
7	2	0464 752 572	Protective gloves mandatory symbol	
8	2	0464 752 573	Crushed hand symbol	
9	2	0464 752 602	Thermosensitive label	161-204°C
10	2	0464 752 574	No pacemaker symbol	



## Soft magnetic rail standard

Item	Qty	Ordering no.	Denomination	Notes
1	1	0464 752 590	Rack rail	1.5 m
2	2	0464 752 568	Rail temperature info label	70°C maximum
3	1	0464 752 569	Rail connector	
4	26	0464 752 570	Magnetic stud	70°C maximum
5	2	0464 752 572	Protective gloves mandatory symbol	
6	2	0464 752 573	Crushed hand symbol	
7	2	0464 752 574	No pacemaker symbol	
8	2	0464 752 575	Heat-sensitive label	65-93°C
9	28	0464 752 576	Hexagon head screw	M5×10 Z8 ISO4017
10		0464 752 571	Magnetic studs with screws	Set of 4 (not shown in illustration)

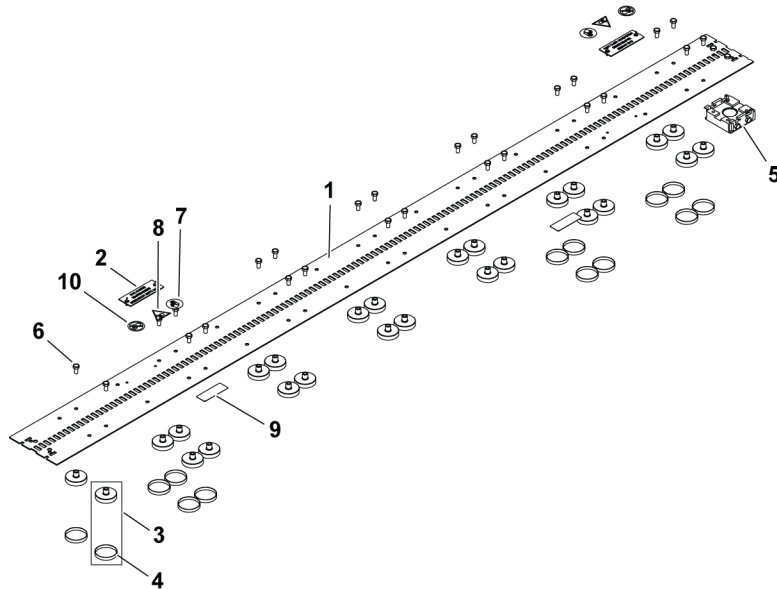
Item	Ordering no.	Denomination	Notes
2601	0464 752 592	Standard magnetic flexible track L 1500 mm	Including item 1 to 9



## Soft magnetic rail - High temperature 1500 mm

Item	Qty	Ordering no.	Denomination	Notes
1	1	0464 752 590	Rack rail	1.5 m
2	2	0464 752 598	Info label high temperature	180°C maximum
3	14	0464 752 600	High temperature magnet + cap + screw	
4	14	0464 752 599	Magnet cap	
5	1	0464 752 569	Rail connector	
6	28	0464 752 576	Hexagon head screw	M5×10 Z8 ISO4017
7	2	0464 752 572	Protective gloves mandatory symbol	
8	2	0464 752 573	Crushed hand symbol	
9	2	0464 752 602	Thermosensitive label	161 - 204°C
10	2	0464 752 574	No pacemaker symbol	

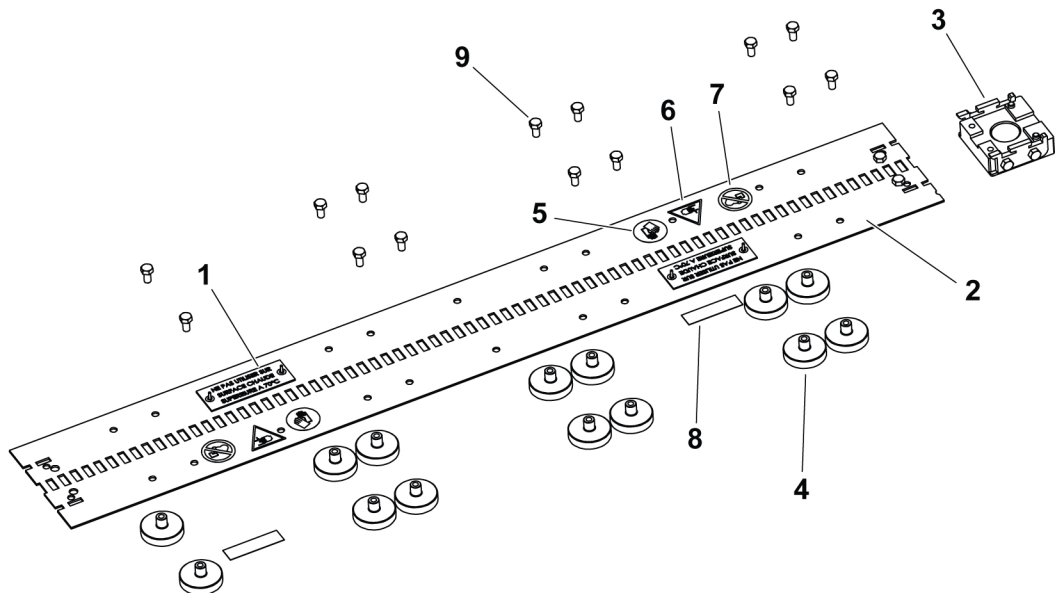
Item	Ordering no.	Denomination	Notes
2701	0464 752 594	High temperature (180°C maximum) magnetic flexible track L 1500 mm	Including item 1 to 10



## Soft magnetic rail - Standard semi length 750 mm

Item	Qty	Ordering no.	Denomination	Notes
1	2	0464 752 568	Rail temperature info label	70°C maximum
2	1	0464 752 603	Rack rail	0.75 m
3	1	0464 752 569	Rail connector	
4	14	0464 752 570	Magnetic stud	70°C maximum
5	2	0464 752 572	Protective gloves mandatory symbol	
6	2	0464 752 573	Crushed hand symbol	
7	2	0464 752 574	No pacemaker symbol	
8	2	0464 752 575	Heat-sensitive label	65-93°C
9	16	0464 752 576	Hexagon head screw	M5×10 Z8 ISO4017
10		0464 752 571	Magnetic studs with screws	Set of 4 (not shown in illustration)

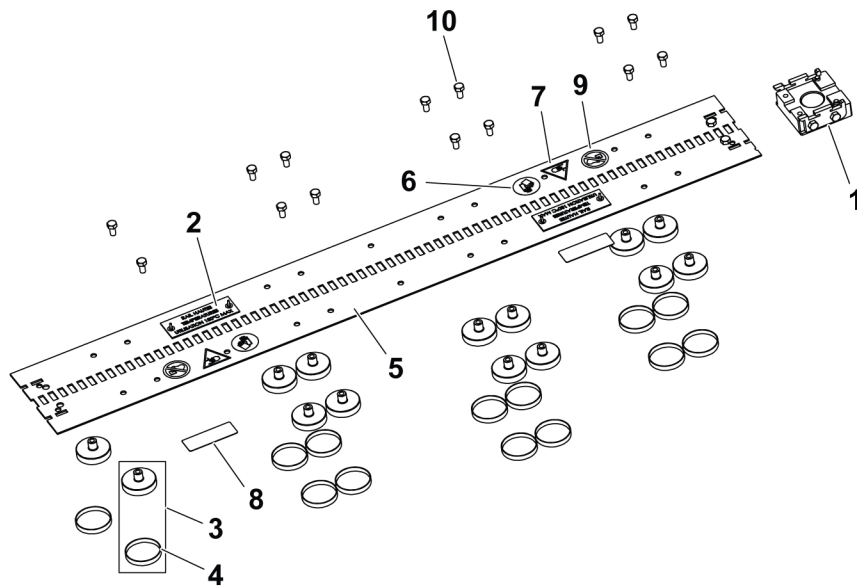
Item	Ordering no.	Denomination	Notes
2801	0464 752 593	Half-length magnetic flexible track L 750 mm	Including item 1 to 9



## Soft magnetic rail - High temperature semi length 750 mm

Item	Qty	Ordering no.	Denomination	Notes
1	1	0464 752 569	Rail connector	
2	2	0464 752 598	Info label high temperature	180°C maximum
3	14	0464 752 600	High temperature magnet + cap + screw	
4	14	0464 752 599	Magnet cap	
5	1	0464 752 603	Rack rail	0.75 m
6	2	0464 752 572	Protective gloves mandatory symbol	
7	2	0464 752 573	Crushed hand symbol	
8	2	0464 752 602	Thermosensitive label	161 - 204°C
9	2	0464 752 574	No pacemaker symbol	
10	16	0464 752 576	Hexagon head screw	M5×10 Z8 ISO4017

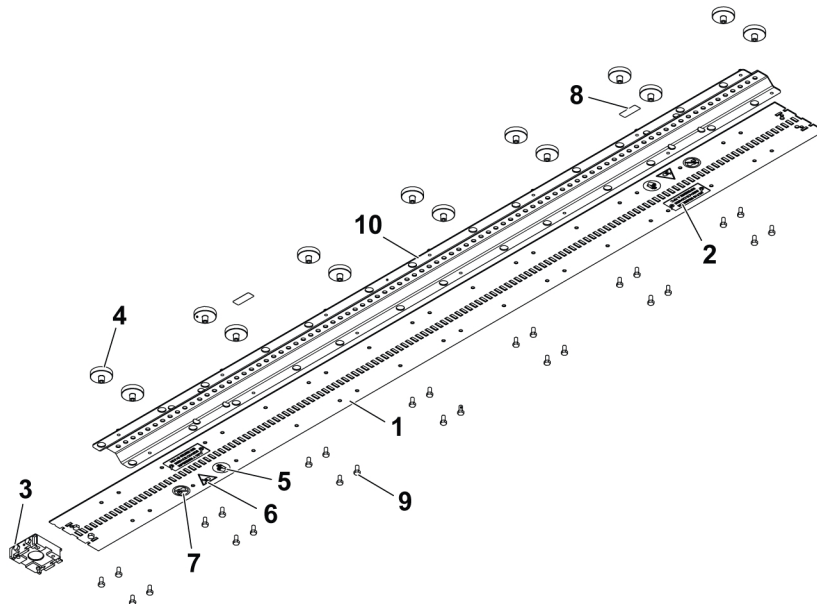
Item	Ordering no.	Denomination	Notes
2901	0464 752 595	Half-length high temperature (180°C maximum) magnetic flexible track L 750 mm	Including item 1 to 10



## Rigid magnetic rail 1500 mm

Item	Qty	Ordering no.	Denomination	Notes
1	1	0464 752 590	Rack rail	1.5 m
2	2	0464 752 568	Rail temperature info label	70°C maximum
3	1	0464 752 569	Rail connector	
4	26	0464 752 570	Magnetic stud	70°C maximum
5	2	0464 752 572	Protective gloves mandatory symbol	
6	2	0464 752 573	Crushed hand symbol	
7	2	0464 752 574	No pacemaker symbol	
8	2	0464 752 575	Heat-sensitive label	65-93°C
9	28	0464 752 576	Hexagon head screw	M5×10 Z8 ISO4017
10	1	0464 752 680	Stiffener for rail	
11		0464 752 571	Magnetic studs with screws	Set of 4 (Not shown in illustration)

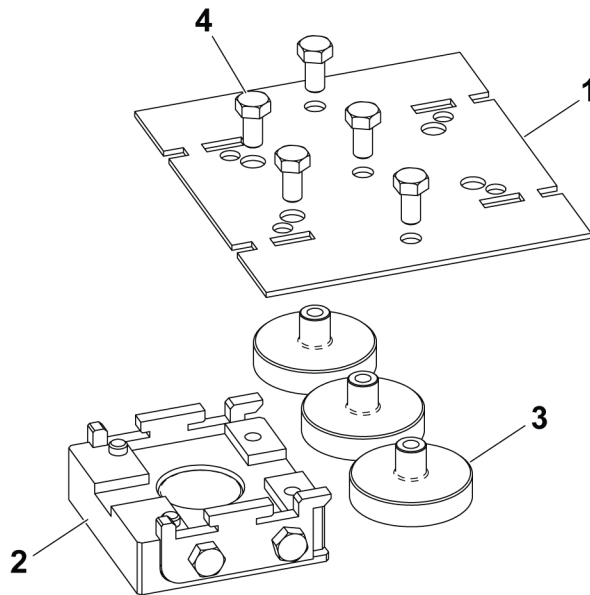
Item	Ordering no.	Denomination	Notes
2100 1	0464 752 604	Stiffed magnetic track L 1500 mm	Including item 1 to 10



## Plates

Item	Qty	Ordering no.	Denomination	Notes
1	1	0464 752 614	End plate sheet	
2	1	0464 752 569	Locating comb	
3	3	0464 752 570	Magnetic stud	70°C maximum
4	5	0464 752 576	Hexagon head screw	M5×10 Z8 ISO4017

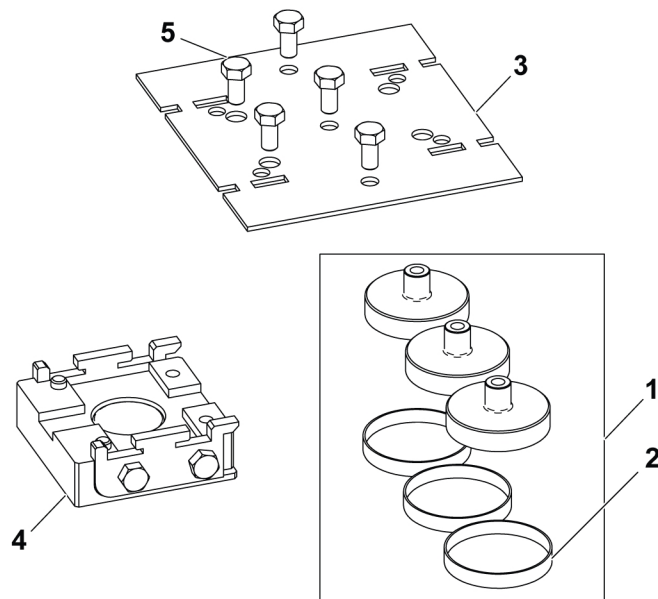
Item	Ordering no.	Denomination	Notes
21001	0464 752 613	Additional magnetic end of flexible track	Including item 1 to 4



## High temperature additional magnet plate

Item	Qty	Ordering no.	Denomination	Notes
1	3	0464 752 600	High temperature magnet + cap + screw	
2	3	0464 752 599	Magnet cap	
3	1	0464 752 614	End plate sheet	
4	1	0464 752 569	Rail connector	70°C maximum
5	5	0464 752 576	Hexagon head screw	M5×10 Z8 ISO4017

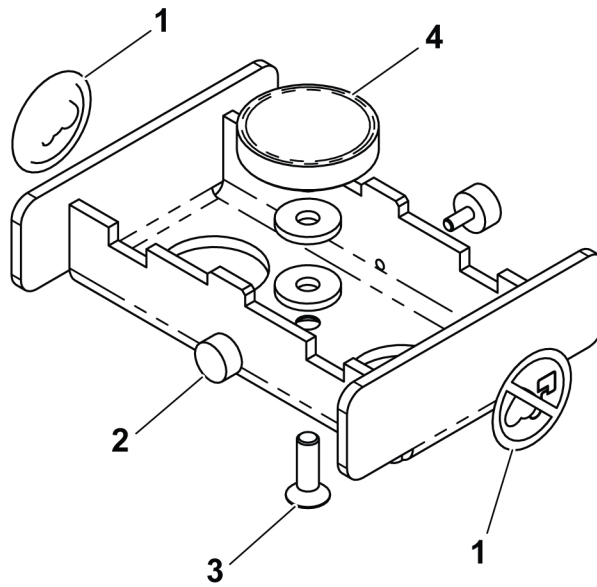
Item	Ordering no.	Denomination	Notes
21101	0464 752 615	Additional high temperature (180°C maximum) magnetic end of flexible track	Including item 1 to 5



## Rail end stop

Item	Qty	Ordering no.	Denomination	Notes
1	2	0464 752 574	No pacemaker symbol	
2	2	0464 752 437	Pot magnet	Ø16 M4
3	1	0464 752 618	Socket head cap screw	M5×16
4	1	0464 752 690	High temperature magnet	Ø32 mm

Item	Ordering no.	Denomination	Notes
21201	0464 752 616	Rail end stop	Including item 1 to 4







# A WORLD OF PRODUCTS AND SOLUTIONS.



For contact information visit [esab.com](http://esab.com)

ESAB AB, Lindholmsallén 9, Box 8004, 402 77 Gothenburg, Sweden, Phone +46 (0) 31 50 90 00

[manuals.esab.com](http://manuals.esab.com)

